

EXPERIENCE THE
ALLIANCE
DIFFERENCE



Alliance **R32** Cassette Light Commercial INVERTER

MODEL: FOUCI12-R32, 18, 24, 36 & 48

- 5 models, **Single-phase**
- Heating/Cooling
- Low noise output and Energy-efficient
- Indoor airflows from 330m³ to 2000m³
- Eco-friendly with easy-to-use controllers
- Max. pipe length to outdoor unit up to 75m



Eco-Friendly:

Significantly reduces global warming potential by up to 75%.

Efficient:

Offers up to 12% higher efficiency and uses 40% less refrigerant.

Cost-Effective:

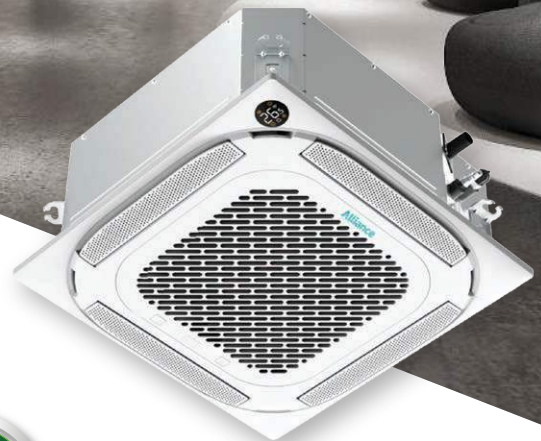
Lowers energy consumption and operational costs.

Safe:

Mildly flammable but non-explosive.

Recyclable:

Easier to reuse and recycle due to its single-component nature.

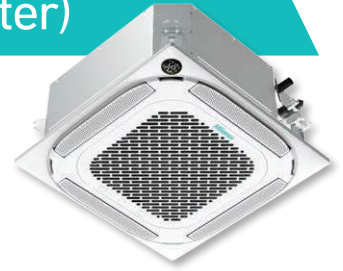


Alliance

www.allianceafrica.co.za

fourways

New Alliance R32 Cassette Light Commercial (Inverter)



With features like quiet operation and high energy efficiency, the new Alliance R32 Cassette Inverter range is beautifully designed and innovatively space-saving units, that blend perfectly into any environment. Large selection of single and three-phase cassettes that are suitable for household and business applications.

Indoor Model			FOUCI12-R32	FOUCI18-R32	FOUCI24-R32	FOUCI36/1-R32	FOUCI48/1-R32	
Power supply (Indoor)		V,Hz,Ph	220-240V,1Ph, 50Hz	220-240V,1Ph, 50Hz	220-240V,1Ph, 50Hz	220-240V,1Ph, 50Hz	220-240V,1Ph, 50Hz	
Cooling	Capacity	Btu/h	12000 (2900-14200)	18000 (9900-20000)	24000 (11250-27000)	36000(9200-39000)	48000 (12000-54000)	
	Input	W	1015 (160-1450)	1550 (720-2040)	2320 (780-2750)	3950 (900-4200)	4980 (810-6350)	
	EER	W/W	3.47	3.40	3.03	2.67	2.82	
	Current	A	4.5 (1.3-6.4)	6.9 (3.2-9.0)	10.2 (4.2-12)	17.5 (4.2-18.5)	21.3 (5.8-27.7)	
Heating	Capacity	Btu/h	13000 (1600-14800)	19000 (8100-21500)	26000 (9500-29000)	38000 (9500-42000)	55000 (14000-59000)	
	Input	W	1020 (125-1390)	1560 (700-1950)	1900 (610-2300)	3000 (800-3950)	4580 (910-5900)	
	COP	W/W	3.74	3.57	4.01	3.71	3.52	
	Current	A	4.5 (1.1-6.2)	6.8 (3.1-8.6)	8.5 (3.6-10.1)	13.5 (3.5-17.5)	19.6(6.6-25.3)	
	Input	W	/	/	64	157	157	
Speed	r/min	800/750/700	800/750/700	608/552/496	700/630/570	712/648/584		
Indoor coil	a.Number of rows		2	2	2	3,0	3	
	b.Tube pitch(a)x row pitch(b)	mm	21x13.37	21x13.37	21x13.37	21x13.37	21x13.37	
	c.Fin spacing	mm	1.3	1,3	1,3	1,3	1.3	
	d.Fin type (code)		Hydrophilic aluminum	Hydrophilic aluminum	Hydrophilic aluminum	Hydrophilic aluminum	Hydrophilic aluminum	
	e.Tube outside dia.and type	mm	Φ7,Inner groove tube	Φ7,Inner groove tube	Φ7,Inner groove tube	Φ7,Inner groove tube	Φ7,Inner groove tube	
	f.Coil length x height x width	mm	1375x210x13.37+1305x210x13.37	1375x13.37x210+1305x13.37x210	2155x168x26.74	2135x210x40.11	980x252x40.11+980x252x40.11	
	g.Number of circuits		4	4	4	10	10	
Indoor air flow (Hi/Mi/Lo)		m ³ /h	620/520/330	660/540/300	1247/1118/992	1700/1530/1300	1900/1750/1600	
Indoor sound pressure level (Hi/Mi/Lo)		dB(A)	42/38.5/31.5/25.5	44/41/31.5/25	45/42.5/37/27.5	51/48/46/40	51.5/49.0/46.5/38.5	
Indoor unit	Dimension (W x D x H)(body)	mm	570x570x245	570x570x245	830x830x205	830x830x245	830x830x287	
	Packing (W x D x H)(body)	mm	715x640x295	715x640x295	910x910x250	910x910x290	910x910x330	
	Dimension (W x D x H)(panel)	mm	620x620x50	620x620x50	950x950x55	950x950x55	950x950x55	
	Packing (W x D x H)(panel)	mm	715x700x115	715x700x115	1035x1035x90	1035x1035x90	1035x1035x90	
	Net/Gross weight(body)	kg	16.1/18.8	16.2/19	21.6/25.4	27.2/31.2	29.3/33.5	
	Net/Gross weight	kg	2.7/4.3	2.7/4.3	6/9	6/9	6/9	
Design pressure		MPa	4.3/1.7	4.3/1.7	4.3/1.7	4.3/1.7	4.3/1.7	
Drainage water pipe dia.		mm	ODΦ25mm	ODΦ25mm	ODΦ25mm	ODΦ25mm	ODΦ25mm	
Refrigerant piping		Liquid side/ Gas side	mm	6.35mm(1/4in)/9.52mm(3/8in)	6.35mm(1/4in)/12.7mm(1/2in)	9.52mm(3/8in)/15.9mm(5/8in)	9.52mm(3/8in)/15.9mm(5/8in)	9.52mm(3/8in)/15.9mm(5/8in)
Controller		Standard	Remote Control	Remote Control	Remote Control	Remote Control	Remote Control	
Operation temperature		°C	16-30	16-30	16-30	16-30	16-30	
Room temperature	Cooling	°C	16-32/0-30	16-32/0-30	16-32	16-32	16-32	
	Heating	°C	-15-50/20-24	-15-50/20-24	0-30	0-30	0-30	

Outdoor Model			FOUCI12X-R32	FOUCI18X-R32	FOUCI24X-R32	FOUCI36X/1-R32	FOUCI48X/1-R32
Power supply		V,Hz,Ph	220-240V,1Ph, 50Hz	220-240V,1Ph, 50Hz	220-240V,1Ph, 50Hz	220-240V,1Ph, 50Hz	220-240V,1Ph, 50Hz
Max. input consumption		W	1850	2950	3700	5000	5000
Max. current		A	1850	2950	19	22.5	10
	Type		ROTARY	ROTARY	Twin-ROTARY	ROTARY	ROTARY
	Capacity	W	3100	4385	7600	10010	10010
	Input	W	765	1140	2045	2765	2765
	Rated current(RLA)	A	4,7	7.50	9.30	5.38	5.38
	Input	W	49.5	49.5	80	150	150
Capacitor	Speed	r/min	780/600	760/650	830/700/550	950/850/700	950/850/700
	Speed	r/min	780/600	760/650	830/700/550	950/850/700	950/850/700
	b.Tube pitch(a)x row pitch(b)	mm	21x22	21x22	21x22	25.4x22	25.4x22
	c.Fin spacing	mm	1.3	1.3	1.3	1.3	1.3
	d.Fin type (code)		Hydrophilic aluminum	Hydrophilic aluminum	Hydrophilic aluminum	Hydrophilic aluminum	Hydrophilic aluminum
	e.Tube outside dia.and type	mm	Φ7,Inner groove tube	Φ7,Inner groove tube	Φ7,Inner groove tube	Φ9.52,Inner groove tube	Φ9.52,Inner groove tube
	f.Coil length x height x width	mm	745x504x22	860x504x44	900x609x22+540x609x22	995x762x44	995x762x44
	g.Number of circuits		2	4	5	4	4
	g.Number of circuits		2	4	5	4	4
Outdoor air flow			2200	2100	3500	4000	4000
Outdoor sound pressure level (Hi/Mi/Lo)		dB(A)	57	58	60	63	64.0
Throttle type			EXV	EXV	EXV+Throttle valve	EXV	EXV
	Packing (W*D*H)	mm	887x337x610	915x370x615	995x398x740	1090x500x885	1090x500x885
	Net/Gross weight	Kg	26.6/29	32.5/35.2	41.9/45.2	66.9/71.5	80.5/85
Refrigerant type	Type		R32	R32	R32	R32	R32
	GWP		675	675	675	675	675
	GWP	Kg	0.71	1.15	1.4	2.4	2.4
Design pressure		MPa	4.3/1.7	4.3/1.7	4.3/1.7	4.3/1.7	4.3/1.7
Refrigerant piping	Liquid side/ Gas side	mm(inch)	6.35mm(1/4in)/9.52mm(3/8in)	6.35mm(1/4in)/12.7mm(1/2in)	9.52mm(3/8in)/15.9mm(5/8in)	9.52mm(3/8in)/15.9mm(5/8in)	9.52mm(3/8in)/15.9mm(5/8in)
	Max. refrigerant pipe length	m	25	30	50	75	75
	Max. difference in level	m	10	20	25	30	30
Ambient temperature	Cooling	°C	-15-50	-15-50	-15-50	-15-50	-15-50
	Heating	°C	-20-24	-20-24	-20-24	-20-24	-20-24

Alliance reserves the right to discontinue or change specifications at any time without notice and without incurring obligation. E&OE.

Alliance

JHB & Central: (011) 704-6320
 Pretoria: (012) 643-0445
 Gqeberha (PE): (041) 484-6413

KZN: (031) 579-1895
 CPT: (021) 556-8292
 EL: (043) 722-0671

fourways