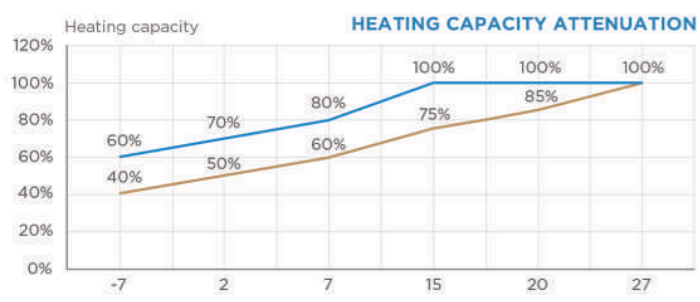


ECO+ Series Pool Heat Pump

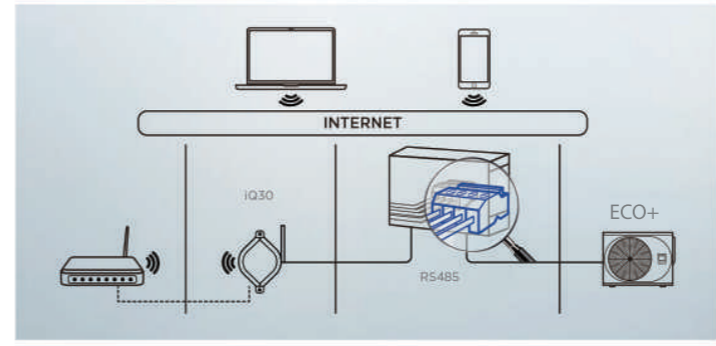
- The ECO+ series is committed to create a future **Net-Zero** heat pump product that conforms to the sustainable development strategy in terms of manufacturing/materials/equipment use
- ECO+ is the latest inverter heat pump range from ITS, featuring all the latest technology features.



No Recession
ONLY ECO+: ECO+ heat pump have **0 heating capacity recession** from ambient temp **27°C to 15°C**, while traditional heat pump have at least **20% -30%** capacity recession

Heating&Cooling

ECO+ heat pump contains **heating and cooling and automatic** modes, covering a wide range of operating environment temperature and target water temperature



Pool system centralized control

ECO+ heat pump is compatible with all centralized control pool systems using **Modbus protocol and RS485 connector**

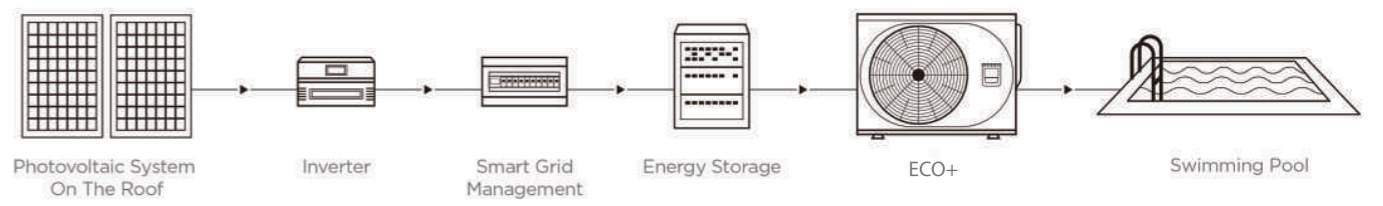
IOT&APP

App controls and **IOT** platforms are designed to ensure user ease of operation and reduce equipment maintenance costs



SG-Ready

SG-ready ensures that ECO+ heat pump uses as much clean energy as possible from the smart grid and stores the energy in the swimming pool. When the smart grid is fully supplied with clean energy, ECO+ heat pumps consume close to zero carbon



Smart Memory

Power-off memory function restores the ECO+ series to preset parameters after restart

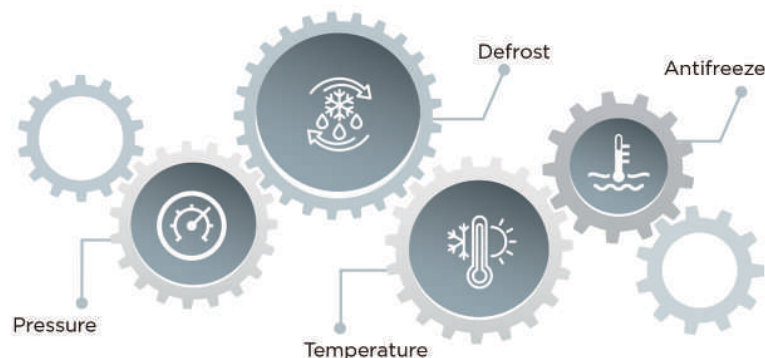


Silent Mode

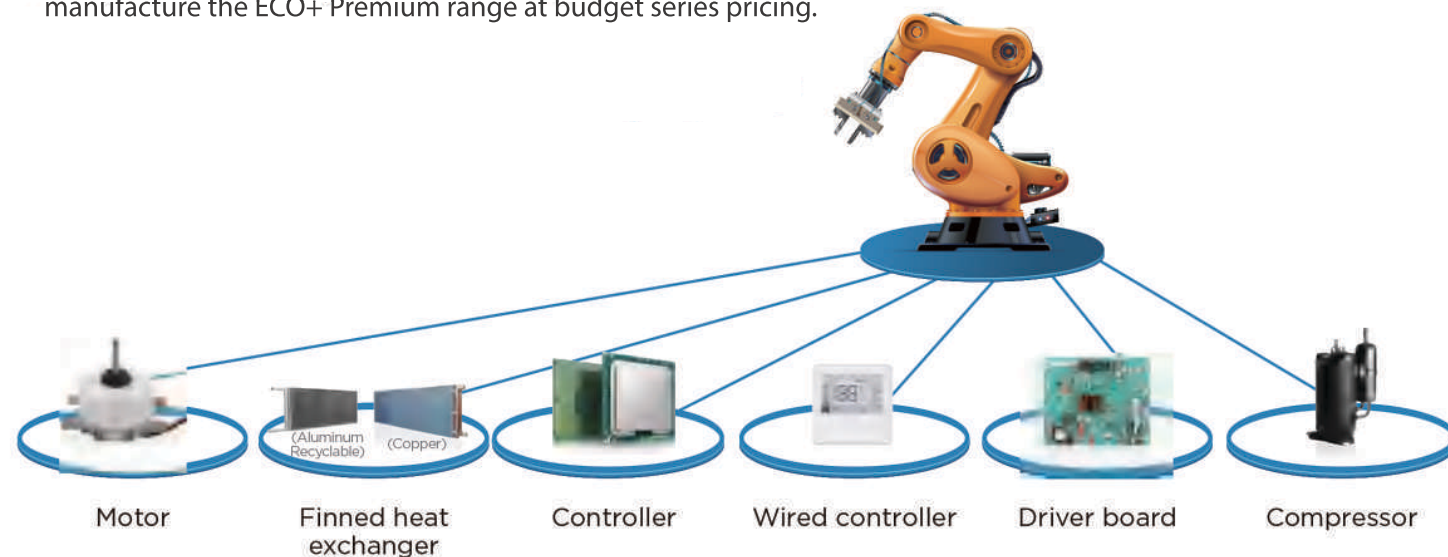
ECO+ series heat pumps in silent mode can reach 60% of unit capacity at 36dB(A) level

System Protection

ECO+ series heat pumps have more than 10 protection functions including defrost/pressure/temperature/antifreeze to ensure that the unit runs in a long-term healthy state

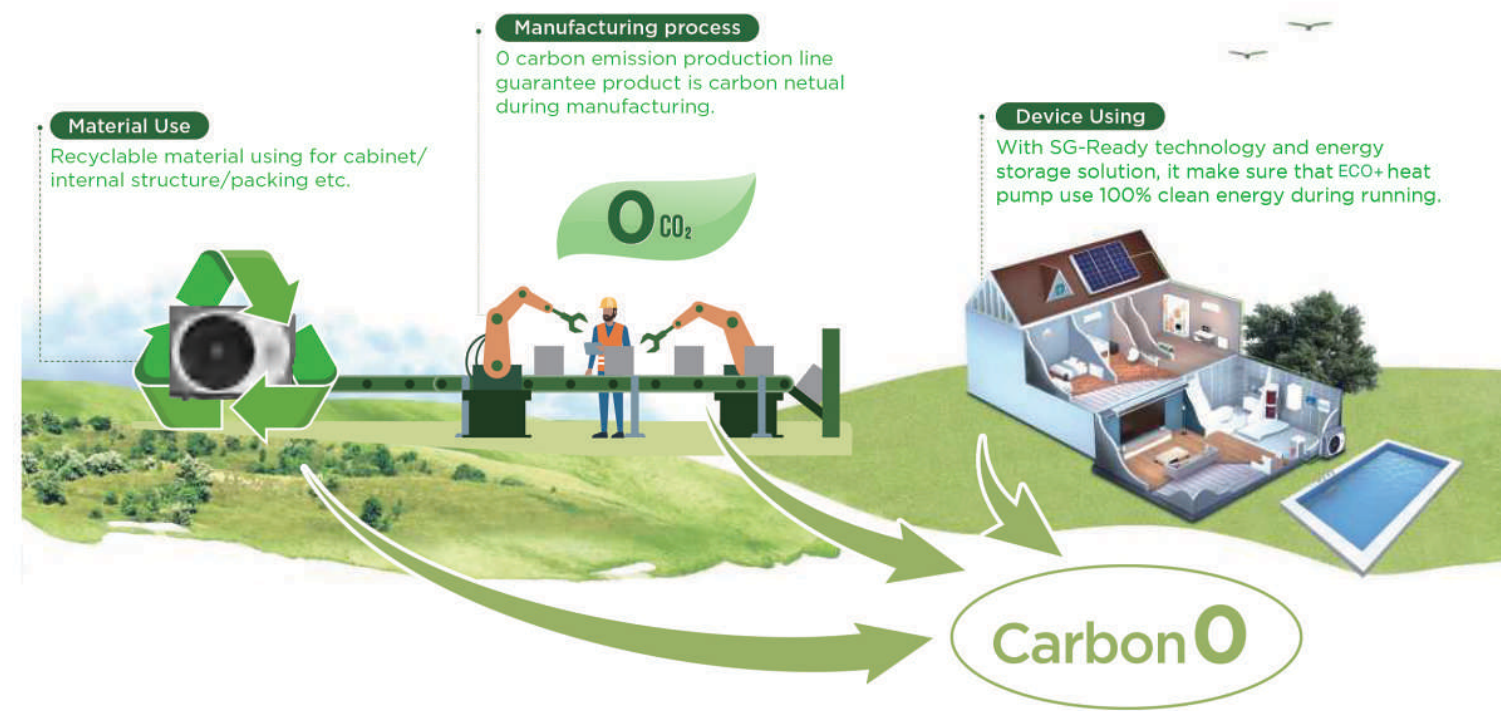


Our manufacturing partner boasts a very high level of vertical intergration enabling us to manufacture the ECO+ Premium range at budget series pricing.



Parameter table

Model Number		ITS-10.3HPI	ITS-12.8HPI	ITS-14.5HPI	ITS-18.7HPI
Boost Mode(Max) capacity (Air 27°C/Water 26°C/Humid. 80%)	kW	2.9-10.3	2.9-12.8	2.8-14.5	3.8-18.7
Consumed capacity	kW	0.24-1.56	0.24-2.13	0.23-2.28	0.31-3.67
Heating Capacity (Air 27°C/Water 26°C/Humid. 80%)	KW	2.9-7.16	2.9-9.15	2.8-12.5	3.8-16.0
Consumed capacity	KW	0.24-0.95	0.24-1.35	0.23-1.79	0.31-2.67
Rated Input Current	A	11	13	15	21
Water Volume	m ³ /h	3.1	3.9	5.4	6.9
Power Supply	V/PH/HZ	220-240Vac/1/50Hz			
COP		Up to 12.5			
Casing		Corrosion Resistant ABS			
Refrigerant		R32 -0.55kg	R32 -0.55kg	R32 -0.75kg	R32 -0.78kg
Noise	dBa	41	43	49	50
Water Connection		50mm PVC pipe			
	L	988	988	988	988
Unit Dimensions (mm)	W	365	365	365	365
	H	712	712	712	712
Nett Weight	kg	52	52	56	59



ITS SOLAR & HEAT PUMPS
 PRO DEV PARK,
 LANGENEGGER ST, STRAND, CAPE TOWN, 7140
 021 854 5290
 SALES@ITSSOLAR.CO.ZA

